




Eye
SPY

Look closely, discover
more Challenge

Can you spy everything hidden on
our Daddy of all Dinos sculpture?
Try our challenge to see!

DINOSAUR
GOODIES TO
WIN!


DIPPLE & CONWAY
OPTICIANS
Est. 1916

Eye spy



Did you know there are 38 species of dinosaur in the Daddy of all Dinos design?

The incredible artwork features the following:

1. Diplodocus
2. Iguanodon
3. Lambeosaurus
4. Basilosaurus
5. Dilophosaurus (x2)
6. Tyrannosaurus Rex (x3)
7. Stegosaurus
8. Ornithomimus
9. Ankylosaurus
10. Archaeopteryx (Bird)
11. Allosaurus
12. Carnotaurus
13. Minmi paravertebral
14. Edmontosaurus
15. Parasaurolophus
16. Triceratops (x2)
17. Gallimimus (x3)
18. Spinosaurus
19. Corythosaurus
20. Sarcosuchus (giant crocodile)
21. Utahraptor
22. Kentrosaurus
23. Megalosaurus
24. Sabre-toothed Tiger (x2)
25. Jobaria
26. Mammoth (x2)
27. Pterodactyl (x6)
28. Leedsichthys (Fish)
29. Plesiosaurus
30. Piranha (x2)
31. Mosasaurus
32. Nautilus (jellyfish)
33. Ichthyosaur
34. Brachiosaurus (x2)
35. Einiosaurus
36. Lambeosaurus
37. Indominus Rex
38. Baryonyx

Eye spy



COUNTING EGGS



Q: How many dinosaur eggs are hiding on the Daddy of all Dinosaurs?

Our GoGoDiscover T. Rex sculpture is hiding lots of dinosaur eggs. How many? That would be telling!

Take a closer look to discover them all, count the dinosaur eggs and you could WIN!

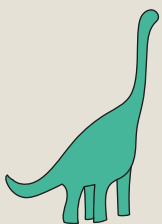
All correct guesses will be entered into a free prize draw, where you

could win a roar-some bundle of dinosaur themed goodies.

Send your answer, name, and a contact number for your parent/guardian to info@dippleconway.co.uk before 12th September 2022. Pop 'DADDY DINO COMP' in the subject.

COUNTING DINOS

Q: Some dinosaurs appear more than once in our eye spy artwork, can you spot them?



Brachiosaurus



Tyrannosaurus Rex



Triceratops



Sabre-toothed Tiger



Mammoths



Pterodactyl